

C>ONSTRUCTOR
UNIVERSITY



The foundations of your future

International Foundation Year

constructor.university/ify





Prepare for your international Bachelor's degree

The International Foundation Year (IFY) prepares for a successful higher education journey by living & learning on our international campus. The one-year academic preparatory program allows you to explore different fields of study, qualify for an international degree program, strengthen personal and academic skills, and boost your academic English.



Qualification pathway

Qualify for a specific field of study



Orientation pathway

Explore a variety of subjects

Find the right pathway for you: constructor.university/ify

Core modules

The core modules are integral parts of the IFY program. They are designed to provide students with basic interdisciplinary knowledge to enhance their academic and personal skills.



Academic English and Literacy

This module aims to strengthen English language abilities in all four areas (listening, speaking, reading, and writing) and improve academic study skills. Students will also learn the fundamentals of conducting research, such as writing academic papers and citing sources.



Foundation Mathematics

Upon joining the program, students will be given a mathematics placement test to determine whether they take the basic or advanced route. Both are designed to help students develop skills in mathematics and statistics. The first semester focuses on generic content, while the module in the second semester is specific to each student's chosen subject.



Computational Thinking and Coding

Students will learn the basics of coding and computational thinking, providing them with problem-solving skills that are highly sought after in today's job market.



TestAS Preparation

The program also provides students with training for the TestAS, which is the precondition for progressing to an undergraduate degree program at Constructor University. The TestAS only applies to students who must pass a German university entrance examination.

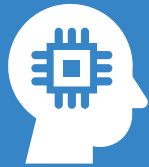


Career Development

This module has been specially designed to enable students to progress to their undergraduate studies. It focuses on increasing the self-competence and social skills necessary to flourish in a university environment. It also provides students with general skills that pave the way for success in life and the world of employment.

Subject areas

Through a combination of core modules and subject-specific study, students will develop the skills they need to start their undergraduate education successfully. Students can choose from three subject areas to prepare for a degree at Constructor University.



Technology

This subject area covers the fundamentals of computer programming, coding, mathematics, and technology. Digitalization lies at the core of all modern industries. It plays a major role in today's work life, so these subjects will prepare students to work in modern tech environments.



Science

This subject area prepares students for degree programs within the Life Sciences & Chemistry department at Constructor University. Each program teaches theoretical and practical skills for rewarding careers across many different industries in the field of natural sciences.



Society

This subject area provides students with the necessary foundation to pursue a variety of business or social science careers, from management and accounting to psychology and human resource management. Students gain practical and professional skills that enhance their employability.



Undergraduate transfer options

Students can attend undergraduate modules and earn up to 15 ECTS credit points that will count towards their bachelor's degree at Constructor University. This gives students direct experience with course materials and professors ahead of their undergraduate studies.

Choose modules from these undergraduate programs:

- ✓ Computer Science
- ✓ Robotics and Intelligent Systems
- ✓ Chemistry and Biotechnology
- ✓ Medicinal Chemistry and Chemical Biology
- ✓ Integrated Social and Cognitive Psychology
- ✓ Industrial Engineering and Management

and more.

Your benefits at a glance

- 1** Gain experience from a highly supportive and academically challenging university environment.
- 2** Develop your study skills, decide on your study direction and qualify for the route to your international degree.
- 3** Improve your academic English – academic literacy is the foundation for successful education.
- 4** Take your time to develop and learn in a less formal teaching approach, strongly supported by your lecturers and academic advisors.
- 5** Intercultural experience – gain an understanding of other cultures to prepare you for your international career.
- 6** Earn up to 15 transferable credit points (ECTS) that will count towards your bachelor's degree at Constructor University.
- 7** Get guaranteed admission to Constructor University after successfully completing the IFY program. Constructor University is the top-ranked #3 Young University in teaching in Germany (THE Young 2022).
- 8** Enjoy the inspiring atmosphere of living and learning in an international, safe campus environment with students from over 110 nations and a rich offering of sports activities, clubs and socializing events.
- 9** Benefit from promising career prospects thanks to strong professor and alumni networks.



With the International Foundation Year, students can explore different subject areas before choosing a major. Attendees grow academically and personally by experiencing a unique learning and living environment on Germany's most international campus.



Educating global talents to make a difference

Constructor University attracts highly talented and open-minded students from all over the world. As a private, English-speaking university, we offer the highest standards in research and teaching. Students of the International Foundation Year live and learn on Constructor University's campus in Bremen, where they benefit from a full package of services from accommodation, food and leisure activities on campus, as well as a broad range of personal, academic and professional counseling services. With our tight-knit support web, we are happy to provide a safe environment for all students, even minor students (16+).



“We are integrated into everyday university life and get a good insight into the life of the students and into the various subjects. It’s now much clearer to me what I want.”

Elias Bosch, Germany



Your full package of service

- Furnished apartment and full board with three meals per day
- Personal support by Resident Mentors in each college
- 24/7 security on campus
- Modern recreational facilities: soccer pitch, outdoor volleyball court, indoor sports hall, fitness gym, rowing tank, music studio, theater space, cinema
- 88 student clubs and societies for sports, fine and performing arts, technology, and social engagement
- Green, spacious campus close to a river and a lovely park
- Semester ticket included to use public transportation
- Orientation Week to facilitate your arrival on campus
- Visa and pre-arrival support

The overview about the fees is available on the website: constructor.university/ify



What do you need to apply?

- Copy of original high school certificate and transcripts of the last 2–3 years
- Official recommendation letter from a high school counselor or a teacher on letterheaded paper (upon request)
- A personal motivation statement
- Proof of English language proficiency; B1 level of the European Framework, minimum score of 45 on the TOEFL iBT / 4.5 on the IELTS / 140 (C) on the Pearson PTE Academic / 43 on the Cambridge Certificate (FCE) / 65 on the Duolingo English test
- Educational History Form



Contact us

Do you have any questions or need a personal consultation?
Call us or write us – we are happy to help you with your inquiry.



Mobile / WhatsApp
+49 172 340 3228



Email
foundationyear@constructor.university



Phone
+49 421 200 4452



Online
constructor.university/ify



Constructor University Bremen gGmbH
Campus Ring 1 · 28759 Bremen · Germany
Nicoleta Dvornicov
Recruitment Counselor and Admission Officer
[constructor.university/ify](https://www.constructor.university/ify)

